



UNIVERSITY
OF WARSAW

Information
about the University of Warsaw
and

the Faculty of Geography and Regional Studies
for Erasmus+ students





UNIVERSITY
OF WARSAW

The University of Warsaw - founded in **1816**

200th anniversary at 2016

- **The largest university in Poland**
- **The best academic research centre** in the country (1600 scientific projects)
- **1st place in the national rankings** of universities (2022).
- 12 subjects ranked in the Shanghai's Global Ranking of Academic Subjects 2021 (Physics, Mathematics: 76-100)
- UW received the renewed **“HR Excellence in Research”** award by European Commission (granted 2015)
- UW belongs to the **4EU+ Alliance**, which was selected as a European University (2019-)
- UW received **research university status** for 2020-2026 (in the 1st competition „**Excellence Initiative**” by Ministry of Science and Higher Education)



UNIVERSITY COMMUNITY, STRUCTURE, PROGRAMMES

- **40 500 students**
 - **2 400 doctoral candidates**
 - **7 500 employees**
 - 3 800 academic teachers (530 professors)
 - **4 800 international students and doctoral candidates**
-
- **24 faculties, 30 academic units**
 - **3 campuses, Main Campus – historical seat of the University; on the Royal Route**
-
- **100 fields of studies (programmes)**
 - **1st , 2nd and long cycle studies (5-years)**
 - **Humanities, social, exact and natural sciences**
 - **27 English-language programmes**
 - 22 double degree programmes run by UW and international partners
 - **4 doctoral schools:**
 - Humanities,
 - Social Sciences,
 - Exact and Natural Sciences,
 - Interdisciplinary Doctoral School
 - **109 post-diploma programmes**





UNIVERSITY
OF WARSAW



UW - the most active Polish institution of higher education in Erasmus+ programme:

- ❑ **1100 interinstitutional agreements;**
- ❑ **460 partner institutions**
- ❑ **4 000 foreign students** incl.
 - 1800 students of Erasmus+ and bilateral agreements.**
 - 250 doctoral students**

- ❑ **KA-131 (Programme countries)**
1300 outcoming and 800 visiting students,
250 STA, 100 STT outcoming staff members,
- ❑ **KA-107 (Partner countries)** –
exchange of 50-100 students and academic staff per year.





UNIVERSITY
OF WARSAW

FACULTIES AT THE UNIVERSITY OF WARSAW

- Faculty of Applied Linguistics
- Faculty of Applied Social Sciences and Resocialisation
- Faculty of Archeology
- Faculty of “Artes Liberales”
- Faculty of Biology
- Faculty of Chemistry
- Faculty of Culture and Arts
- Faculty of Economic Sciences
- Faculty of Education
- Faculty of Geography and Regional Studies
- Faculty of Geology
- Faculty of Journalism, Information and Book Studies
- Faculty of Law and Administration
- Faculty of Management
- Faculty of Mathematics, Informatics and Mechanics
- Faculty of Modern Languages
- Faculty of Oriental Studies
- Faculty of Philosophy
- Faculty of Physics
- Faculty of Polish Studies
- Faculty of Political Science and International Studies
- Faculty of Psychology
- Faculty of Sociology

UNIVERSITY OF WARSAW - 3 campuses

UNIVERSITY IN WARSAW

THREE CAMPUSES:

- Main
(Krakowskie Przedmieście St)
- Ochota
- Służew

COMMUTING

Main Campus ↔ Ochota Campus, 5 km
 128, 175 – about 30 min

Main Campus ↔ Służew Campus, about 10 km
 503 and 402, 222 and 10 / 35 / 71
 – about 45 min

Main Campus ↔ Botanic Garden and Astronomical Observatory, 4 km
 116, 180, 222, 503, E 0 – about 15 min

..... Warsaw metro (lines: M1, M2)

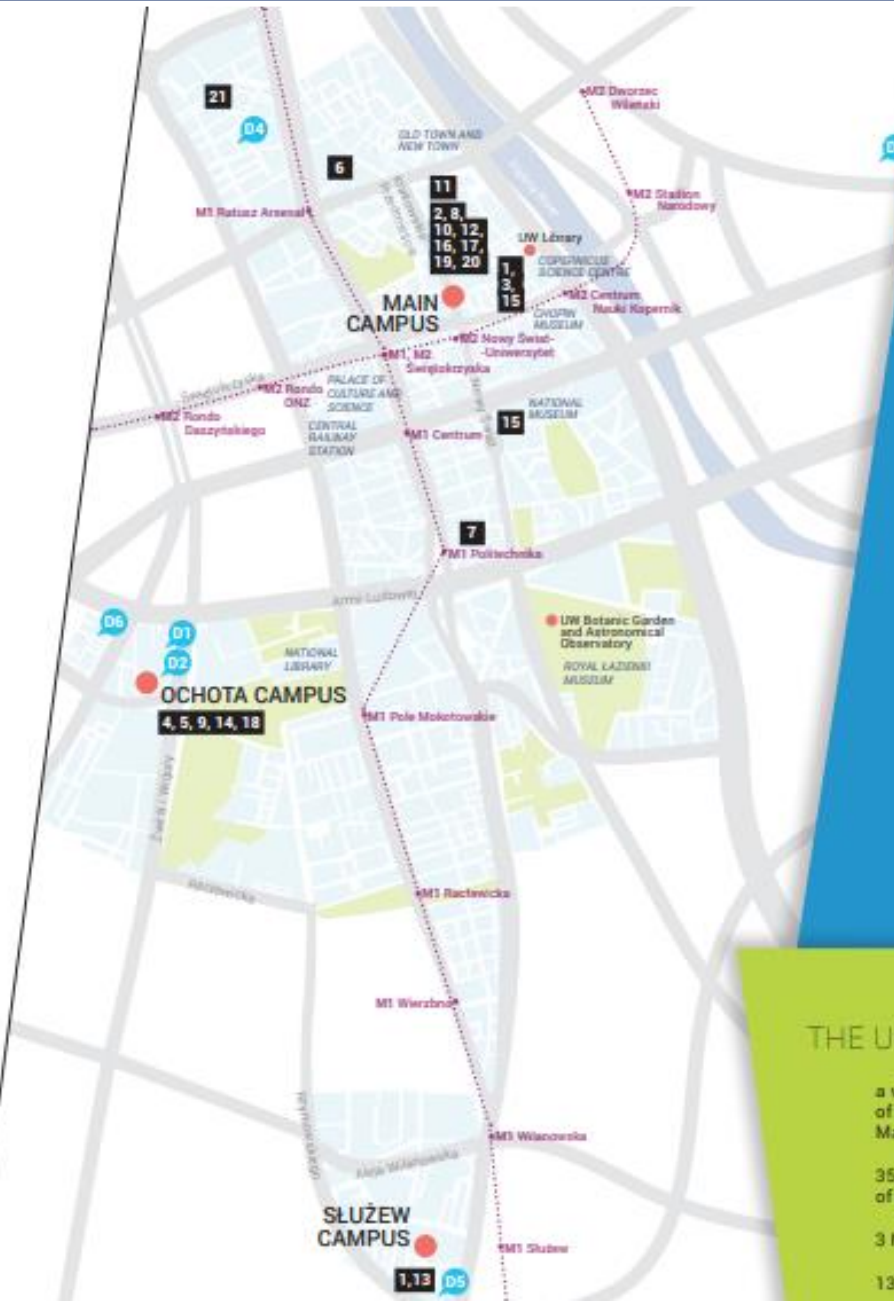
D – dormitories

- 1 97/99 Zwaki i Wigury St
- 2 95/97 Zwaki i Wigury St
- 3 9 and 12 Kickiego St
- 4 10a Zamenhofa St
- 5 5/6 Smyczkowa St
- 6 11 Radomska St

WI-FI / EDUROAM

The university staff and students have access to wireless Internet in the eduroam network having obtained a personal login and password. Guests of units associated with eduroam can log in on a similar basis. More information at: www.en.uw.edu.pl/wi-fi

www.en.uw.edu.pl



21 FACULTIES

OF HUMANITIES, SOCIAL, EXACT AND NATURAL SCIENCES:

1. Applied Linguistics
2. Applied Social Sciences and Resocialisation
3. 'Artes Liberales'
4. Biology
5. Chemistry
6. Economic Sciences
7. Education
8. Geography and Regional Studies
9. Geology
10. History
11. Journalism, Information and Book Studies
12. Law and Administration
13. Management
14. Mathematics, Informatics and Mechanics
15. Modern Languages
16. Oriental Studies
17. Philosophy and Sociology
18. Physics
19. Polish Studies
20. Political Science and International Studies
21. Psychology

THE UNIVERSITY OF WARSAW PROVIDES:

a wide choice of programmes of 1st, 2nd cycle studies and long cycle (uniform) Master's studies

35 programmes of 3rd cycle studies (doctoral)

3 MBA programmes

132 postgraduate programmes



FACULTY OF GEOGRAPHY
AND REGIONAL STUDIES

UNIVERSITY OF WARSAW



UNIWERSYTET
WARSZAWSKI



100 LAT GEOGRAFI
NAUNIWERSYTECIE WARSZAWSKIM



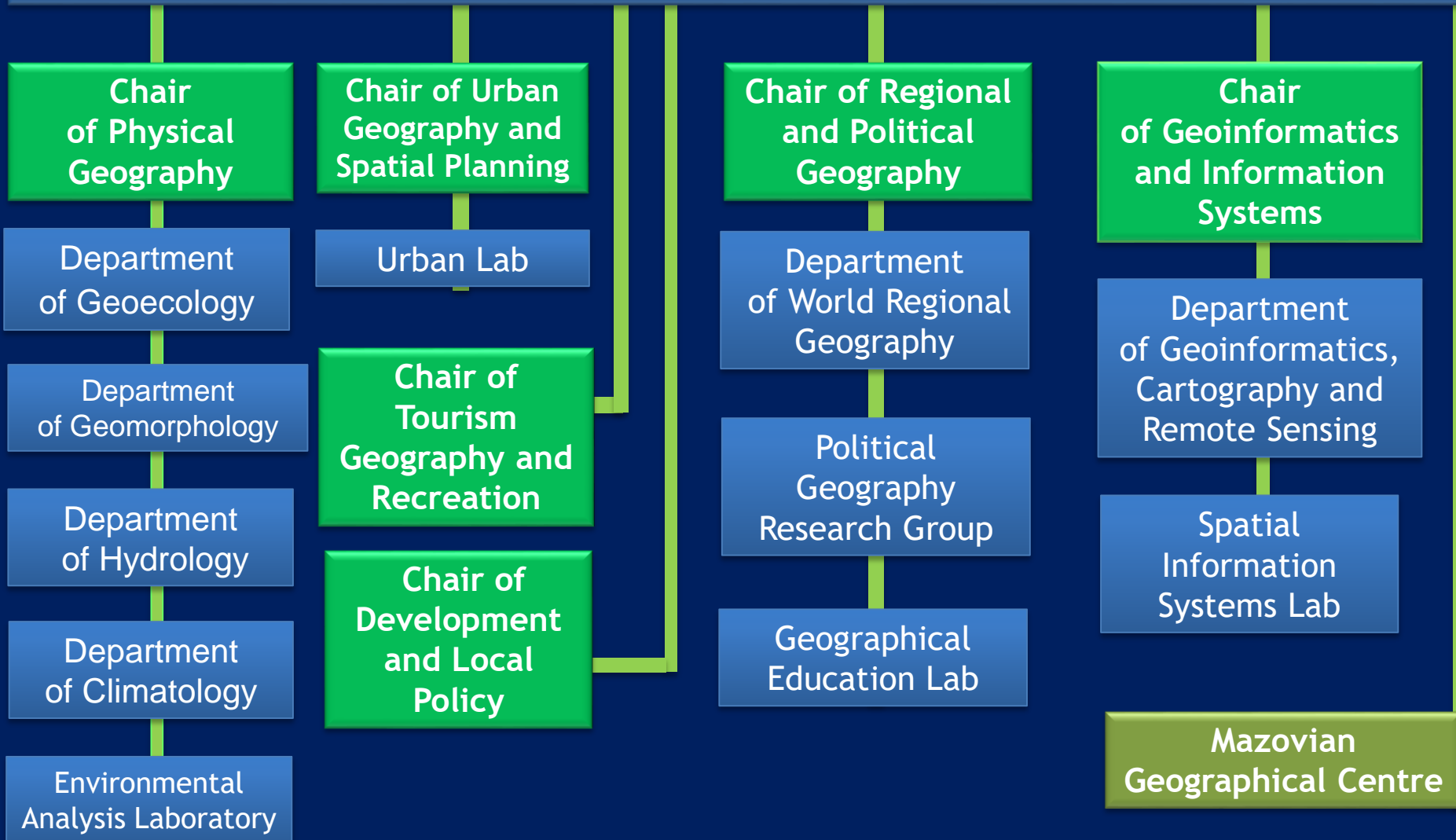
FACULTY OF GEOGRAPHY AND REGIONAL STUDIES UW (FGRS)



FACULTY OF GEOGRAPHY AND REGIONAL STUDIES

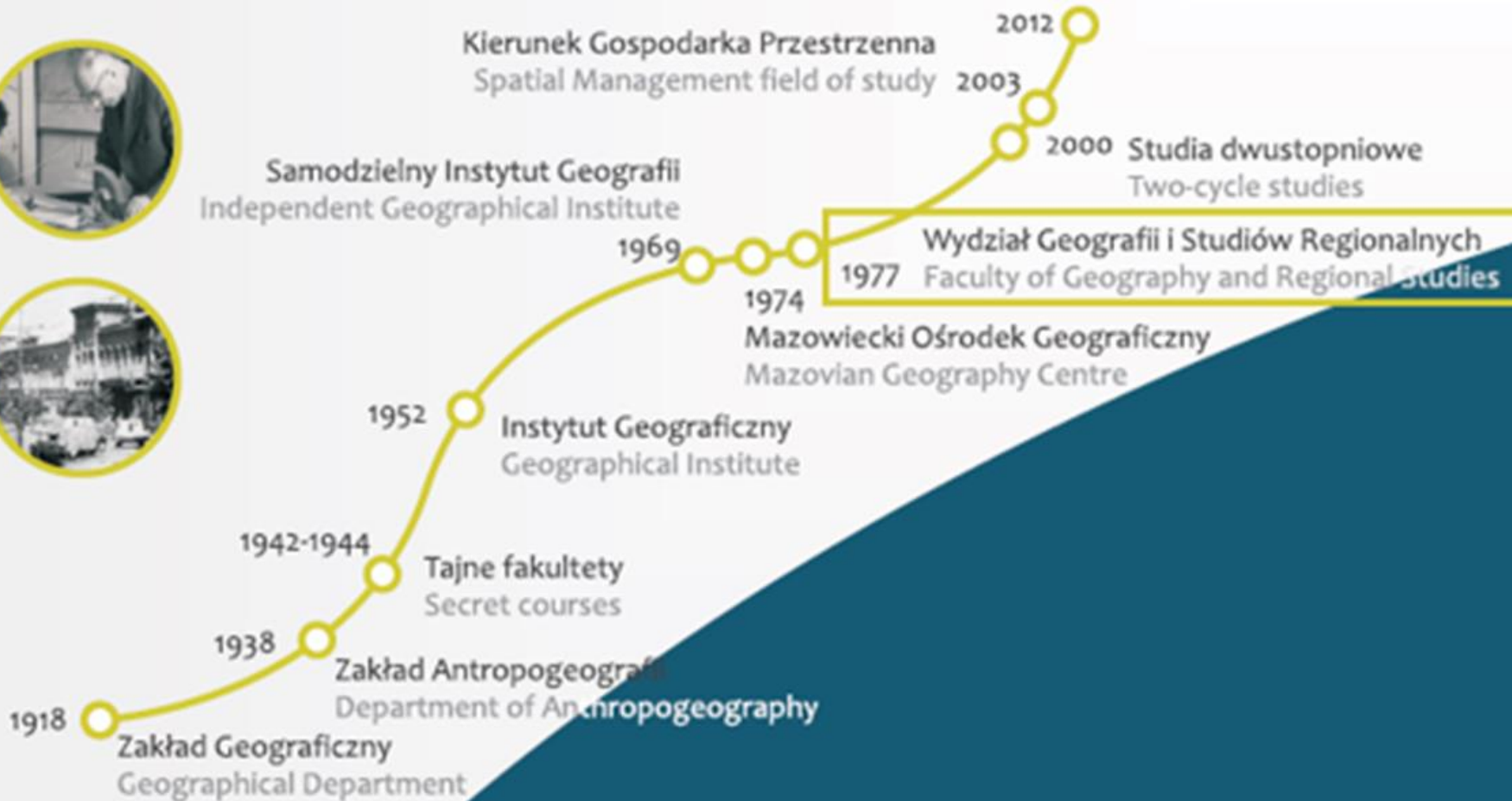
- Geography was introduced at the University of Warsaw **over 100 years ago** (origins: year 1918)
- Faculty was formed **45 years ago** (year 1977)
- **3 study fields:**
 - Geography (1st, 2nd level)
 - Spatial management (1st, 2nd level)
 - Urban studies (2nd level)
- 600 students
- 100 members of academic staff
- 28 Erasmus+ agreements in 14 countries

Structure of the Faculty of Geography and Regional Studies

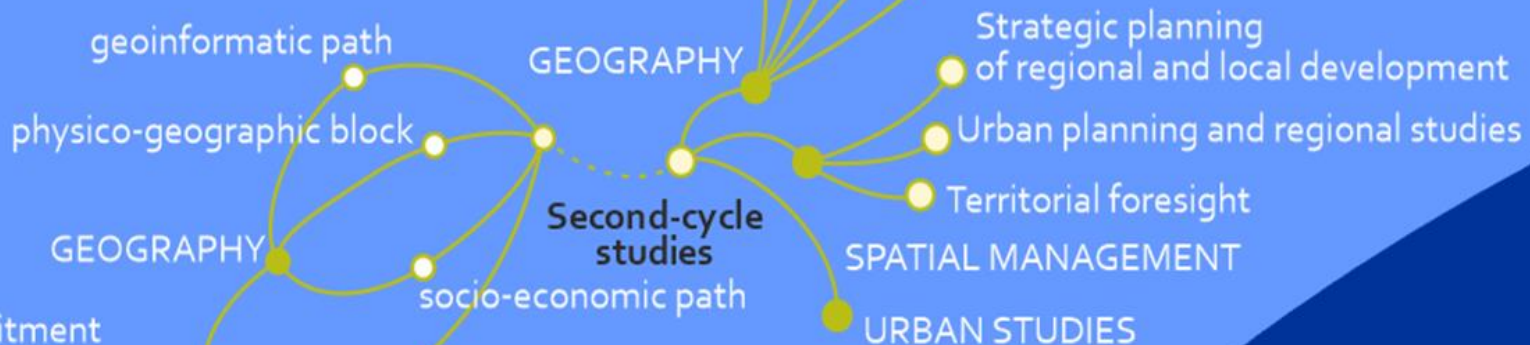


History of the Faculty and Regional Studies, UW

Kamienie milowe Milestones



STUDIES



Recruitment

First-cycle studies

SPATIAL MANAGEMENT



FACULTY OF GEOGRAPHY
AND REGIONAL STUDIES
UNIVERSITY OF WARSAW

Studies at the Faculty of Geography and Regional Studies UW

FIRST LEVEL STUDIES (Bachelor studies)

- Study cycle: 6 semesters
- 2 separate fields of studies:

GEOGRAPHY (3 paths)

1. Physico-geographical path
 2. Socio-economic path
 3. Geoinformatic path
- Selection the specialisation in Geography studies:
 - after III semester
 - Student chooses specialisation and the seminar to prepare his Bachelor's thesis.

SPATIAL MANAGEMENT



Studies at the Faculty of Geography and Regional Studies UW

SECOND LEVEL STUDIES (Master studies)

2-year cycle studies

3 separate fields of studies:

GEOGRAPHY

1. Geocology and Geomorphology
2. Hydrology and Climatology
3. Geoinformatics, cartography, teledetection
4. Urban geography and tourism
5. Globalisation geography

SPATIAL MANAGEMENT

1. Strategic planning of regional development
2. Urbanistics and regionalistics
3. Territorial Foresight

URBAN STUDIES



Faculty of Geography and Regional Studies

ERASMUS+ exchange



- University of La Laguna (Tenerife, Spain)
- University of Reunion

Courses offered at Faculty of Geography and Regional Studies to international students

- All foreign students at UW are welcome to the courses offered by FGRS:
 - Students from Erasmus+ programme choosing our faculty as the main one
 - Students from Erasmus+ exchange from other faculties.
- Educational offer for Erasmus+ students contains courses which represent different branches of geography:
 - Physical geography,
 - Socio-economic geography,
 - Regional geography,
 - Remote Sensing and Geographical Information Systems.
- The courses are taught in English. Polish students also attend these courses. The offer is modified each year.
- The courses are available both for 1st and 2nd cycle students.
- The syllabuses of the courses are available:
 - on the website of the Faculty: <https://wgsr.uw.edu.pl/>
- Courses offered at the University of Warsaw can also be viewed in [ECTS course Catalogue](#)

Courses offered to international students in 2022/2023 (winter semester)

Language of instruction: English

Winter semester 2022/2023

No	Code	Course	Type of course	Number of hours	ECTS
1.	1900-ERASMUS-CHE	Cultural Heritage of Europe – selected issues	Seminar	15	3
2.	1900-ERASMUS-CIT	Current issues in tourism (ERASMUS)	Seminar	15	3
3.	1900-ERASMUS-ECA	Environmental change - from Ice Age to global warming (ERASMUS)	Class	30	6
4.	1900-ERASMUS-GOW	Geography of the World (ERASMUS)	Lecture	45	9
5.	1900-ERASMUS-GPW	Global problems in the contemporary world (ERASMUS)	Lecture	30	6
6.	1900-ERASMUS-GIS	Introduction to functionality and applications of Geographic Information Systems (ERASMUS)	Class	45	9
7.	1900-ERASMUS-MCE	Management of cold environments (ERASMUS)	Lecture	30	6
8.	1900-ERASMUS-NEP	Natural environment of Poland (ERASMUS)	Lecture	30	6
9.	1900-ERASMUS-SDV	Sustainable development - between global and local perspectives (ERASMUS)	Seminar	30	6
10.	1900-ERASMUS-TGP	Tourism Geography of Poland (ERASMUS)	Lecture	15	3

Courses offered at FGRS to international students in 2022/23 (summer semester)

Language of instruction: English

Summer semester 2022/2023

No	Code	Course	Type of course	Number of hours	ECTS
1.	1900-ERASMUS-BSE	Baltic Sea environment and its protection (ERASMUS)	Lecture	15	3
2.	1900-ERASMUS -COTW	Cities of the world (ERASMUS)	Lecture	30	6
3.	1900-ERASMUS-CMS	Contemporary migration - social and economic consequences (ERASMUS)	Lecture	30	6
4.	1900-ERASMUS-ECA	Environmental change - from Ice Age to global warming (ERASMUS)	Class	30	6
5.	1900-ERASMUS 0 FRS	Field remote sensing data analysis (ERASMUS)	Seminar	20	3
6.	1900-ERASMUS-GLST	Globalisation studies (ERASMUS)	Online course	30	6
7.	1900-ERASMUS-GOW	Geography of the World (ERASMUS)	Seminar	45	9
8.	1900-ERASMUS-GPW	Global problems in the contemporary world (ERASMUS)	Lecture	30	6
9.	1900-ERASMUS-MCE	Management of cold environments (ERASMUS)	Lecture	30	6
10.	1900-ERASMUS-NEP	Natural environment of Poland (ERASMUS)	Lecture	30	6
11.	1900-ERASMUS-SGSC	Smart, green and sustainable cities (ERASMUS)	Seminar	15	3
12.	1900-ERASMUS-WBC	Wetlands - biodiversity and change (ERASMUS)	Lecture	15	3

Step by step to become an exchange student in Erasmus programme at University of Warsaw

1. **NOMINATION** by your home University.
2. **SUBMISSION OF THE APPLICATION:** The Internet Recruitment System for Candidates (IRK) at University of Warsaw.
- **SELECTION of the courses:** up to 3 different faculties at University of Warsaw. One Faculty becomes the main one (the Faculty from the Erasmus+ agreement). Some faculties have some additional rules about selecting the courses from their offer.

Details on the website of the International Relations Office:

<http://en.bwz.uw.edu.pl/incoming/>

<http://en.bwz.uw.edu.pl/incoming/rules-of-study-grading-scale/>

<http://en.bwz.uw.edu.pl/requirements-of-the-receiving-units/>

Deadlines:

- I semester or the whole academic year: : by May 15th.
- II semester : by November 15th

4. **CONFIRMATION OF ACCEPTANCE** of your application by UW.
5. **PREPARING LEARNING AGREEMENT.**
6. **ENROLLMENT TO THE COURSES** at the USOS system (electronic system at UW).

Apart from „regular” courses, each UW student is encouraged to take which you will be able to register for:

- **one** Polish Language Course,
- Polonicum lectures about Polish culture,
- **one** Foreign Language Course (other than Polish)
- **one** sports class
- general university courses (code:-OG)

Detailed procedure is described on the website of International Relations Office of University of Warsaw:

<http://en.bwz.uw.edu.pl/>

International Relations Office UW

<http://en.bwz.uw.edu.pl/>



INTERNATIONAL
RELATIONS OFFICE

[Mobility information sheet](#) [Incoming students](#) [Erasmus Charter](#) [Welcome Point](#) [About UW](#) [Book an appointment](#) [Contact us](#) [Solidarity with Ukraine](#)



Incoming students



Coronavirus SARS-CoV-2



International programmes

EIB Summer School 2023 – Exploring the EU Climate Bank

27 June – 7 July 2023 – Luxembourg, for Master's students of all fields. **Application deadline: Monday 17 April 2023, until 11:59pm / 23:59 CEST**

[More](#)



Outgoing students

Welcome to IRO Incoming Students

en.bwz.uw.edu.pl > Welcome to IRO Incoming Students

University of Warsaw is the biggest university in Poland with over 200 years tradition.

The University offers wide choice of courses conducted in Polish, English and (many) other languages.

HOW TO APPLY?

WHY UW?

DURING
YOUR STAY

ACCOMMODATION

ACADEMIC
CALENDAR

RULES OF STUDY &
GRADING SCALE

SAFETY &
WELLBEING

ECTS COURSE
CATALOGUE

FAQ

MEET YOUR IRO
CONTACT PERSON

UNIVERSITY OF WARSAW

Main Campus in the centre of Warsaw, where the Faculty of Geography and Regional Studies is located

the best and largest higher education institution in Poland

belongs to the 3% top universities in the world

- Centre of Polish Language and Culture for Foreigners "Polonicum"
- Admissions Office
- Office for Student Affairs
- International Relations Office
- Office for Persons with Disabilities

THE MAIN CAMPUS
26/28 Krakowskie Przedmieście Street

The university life concentrates in three campuses: Main, Ochota and Służew, located in different districts of Warsaw. The University's historic seat, located in the heart of Warsaw, is widely appreciated for its elegant architecture. Impressive edifices, dating back to the 17th century, rank high among Warsaw's sightseeing musts.

UNIVERSITY OF WARSAW LIBRARY
56/66 Dobra Street

The library boasts one of the largest collections of academic volumes in the country as well as one of the biggest and most beautiful roof gardens in Europe. The garden is divided into two parts: the upper and the lower, joined by a cascading stream. The upper garden is open to the public from April to October; the lower garden is open all year round.

WELCOME POINT

Welcome Point is a place for international students and employees. In September and October, it is located on the main campus of UW.

105 - 7 min

- 1 KAZIMIERZOWSKI PALACE**
seat of the University authorities
Admissions Office
Office for Student Affairs
International Relations Office
Office for Persons with Disabilities
Golden Hall, Senate Hall
- 2 FORMER SEMINAR BUILDING**
Faculty of Law and Administration
- 3 FORMER RECTORY BUILDING**
Faculty of Oriental Studies
Institute of Art History
- 4 FORMER SCHOOL SUPERINTENDENT BUILDING**
IT Center
- 5 MINERALOGICAL PAVILION**
Faculty of Polish Studies
- 6 AUDITORIUM BUILDING**
Faculty of Political Science and International Studies
- 7 FORMER MUSEUM BUILDING**
Faculty of History
- 8 MAIN SCHOOL**
Institute of Archaeology
- 9 OLD LIBRARY BUILDING**
Auditorium Hall
- 10 UNIVERSITY GATE**
- 11 AUDITORIUM MAXIMUM**
Adam Mickiewicz Hall
- 12 CZETWERTYŃSKI-URUSKI PALACE**
Faculty of Geography and Regional Studies
- 13 TYSZKIEWICZ-POTOCKI PALACE**
Centre of Polish Language and Culture for Foreigners "Polonicum"
Centre for East European Studies
Museum of the University of Warsaw
Guest Hall (Ball Room)
- 14 ST. ROCH HOSPITAL**
Institute of Polish Culture
- 15 COLLEGIUM IURIDICUM III**
- 16 BUILDING OF THE APPLIED LINGUISTICS AND THE MODERN LANGUAGES FACULTIES**
- 17 UNIVERSITY OF WARSAW LIBRARY**
- 18 INSTITUTE OF PHILOSOPHY**
- 19 FACULTY OF POLITICAL SCIENCE AND INTERNATIONAL STUDIES**
- 20 FACULTY OF "ARTES LIBERALES"**

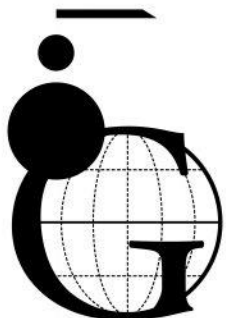
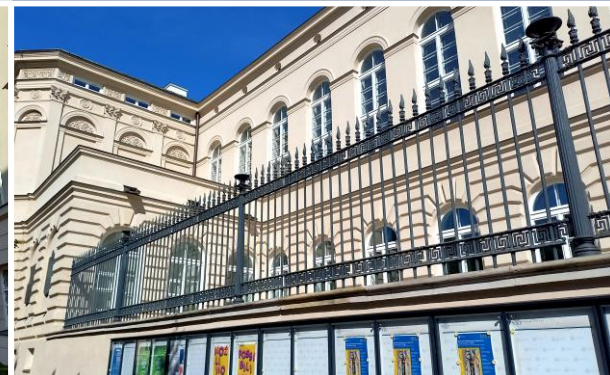
WALKING TRAIL

Streets: Krakowskie Przedmieście, Gestwa, Wiślana, Dobra, Lipowa, Radna, Obożna, Nowy Świat

Facilities: AED, BUS, POST/ATM, ENTRY, ATM

Source: <https://welcome.uw.edu.pl/home/brochures/>

<https://welcome.uw.edu.pl/>



Faculty of Geography and Regional Studies
University of Warsaw
Krakowskie Przedmieście Str. 30
00-927 Warsaw, Poland

<https://wgsr.uw.edu.pl>

Mobility Coordinator
at Faculty of Geography and Regional Studies
Paulina Pokojaska, PhD

erasmus.wgsr@uw.edu.pl